

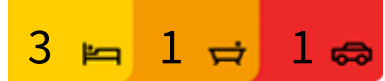


## 160 Williams Street Cambridge

### A Winner on Williams

As soon as you walk through the door you will feel the warmth and comfort that this lovely home offers. Tastefully modernised - Double glazed (Except closed in carport), upgraded insulation, DVS system plus a heat pump. Spacious separate living area with access out through sliding doors to the private north facing garden area. Lovely plantings, porch and patio area for all your outdoor entertaining needs. The kitchen/dining area also has access to the outdoor spaces through new bi-fold doors. 3 double bedrooms, modern family bathroom, separate toilet and laundry. Excellent location - very close to Cambridge East school and Cambridge High school. Quick drive or easy walk to town and convenient for access out on to the expressway. 411m2 section which is low maintenance and fully fenced. Call and make your appointment to view today.

This information has been supplied by the vendor or the vendor's agents and Tree Town Real Estate Limited is merely passing over this information as



**FOR SALE**

Sold

**VIEW**

[cambridge.ljhooker.co.nz/RQBGDJ](https://cambridge.ljhooker.co.nz/RQBGDJ)

**CONTACT**

Gerda Venter 027 3113 722

**LJ HOOKER CAMBRIDGE**

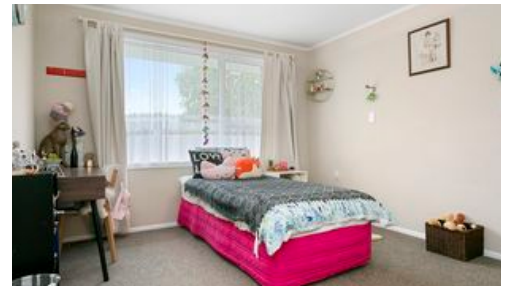
(07) 827 7188

supplied to us. We cannot guarantee its accuracy and reliability as we have not checked, audited, or reviewed the information and all intending purchasers are advised to conduct their own due diligence investigation into this information. To the maximum extent permitted by law we do not accept any responsibility to any party for the accuracy or use of the information herein.

## More About this Property

<b>PROPERTY ID</b>	RQBGDJ
<b>PROPERTY TYPE</b>	Residential
<b>LAND AREA</b>	411 m <sup>2</sup>
<b>HOUSE SIZE</b>	126.00 m <sup>2</sup>
<b>INCLUDING</b>	Close to Schools, Close to Shops, Close to Transport

Licensed Real Estate Agents (REAA2008)



## LJ Hooker Cambridge - Tree Town Real Estate Limited

CONTACT: Gerda Venter  
EMAIL: [gerda.venter@ljhooker.co.nz](mailto:gerda.venter@ljhooker.co.nz)  
MOBILE: 027 3113 722  
PHONE: (07) 827 7188  
FAX: (07) 827 7062

### DISCLAIMER

The above information has been furnished to us by the Vendor. We have not verified whether or not that information is accurate and do not have any belief one way or the other in its accuracy. We do not accept any responsibility to any person for its accuracy and do no more than pass it on. All interested parties should make and rely upon their own enquiries in order to determine whether or not this information is in fact accurate.



[www.ljhooker.co.nz](http://www.ljhooker.co.nz)

Residential | Commercial | Rural | Land Sections | Coastal